

**#1**  
**Course: W, J, K, J, K, W**  
**(Marks to Port)**  
**Wind: South**  
**Approx. 3.75 nm**

**K (FL R "8")**

**A ??**

**FL G "1"**

**W**

**WW**

**C**

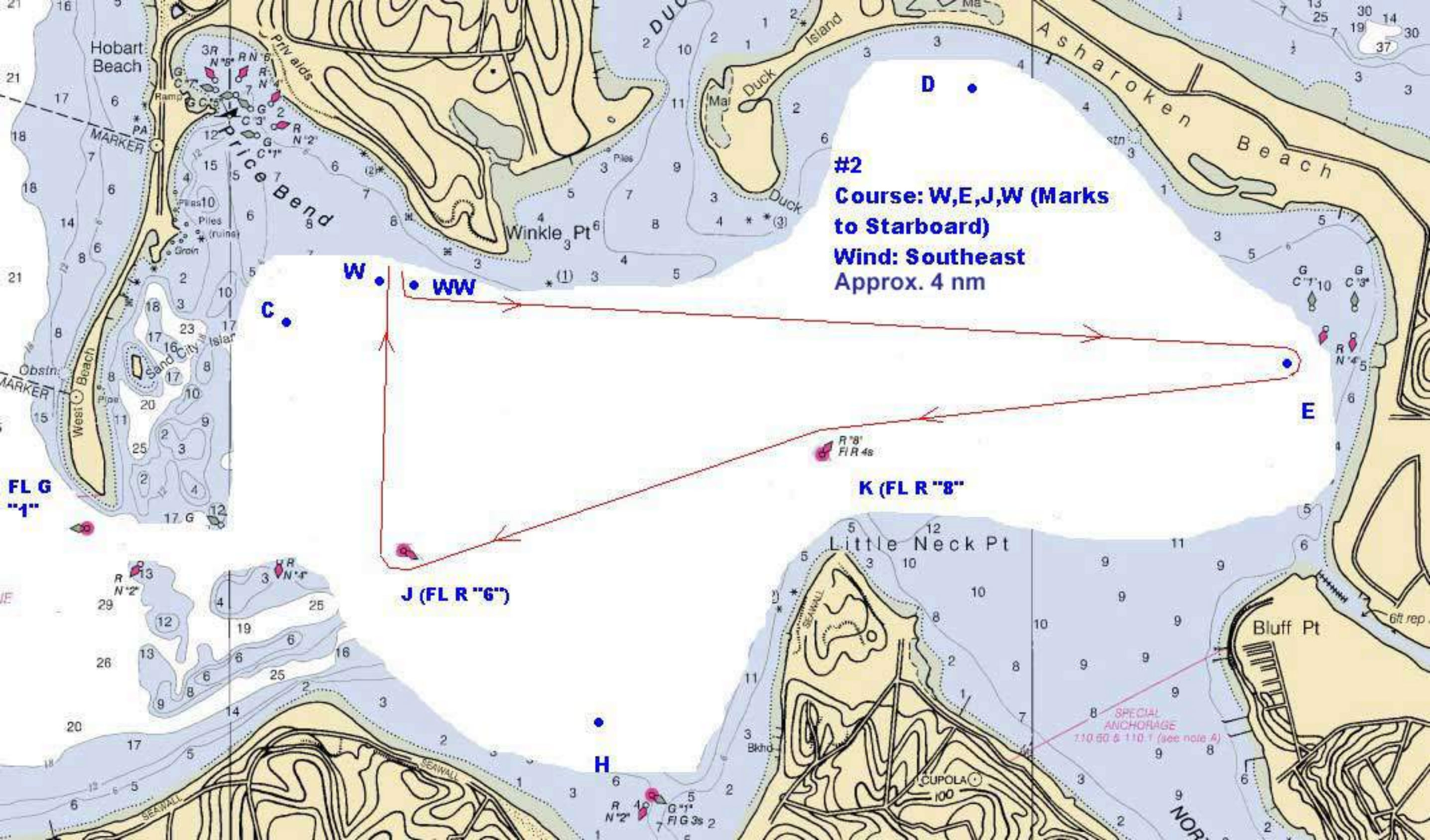
**J**

**H**

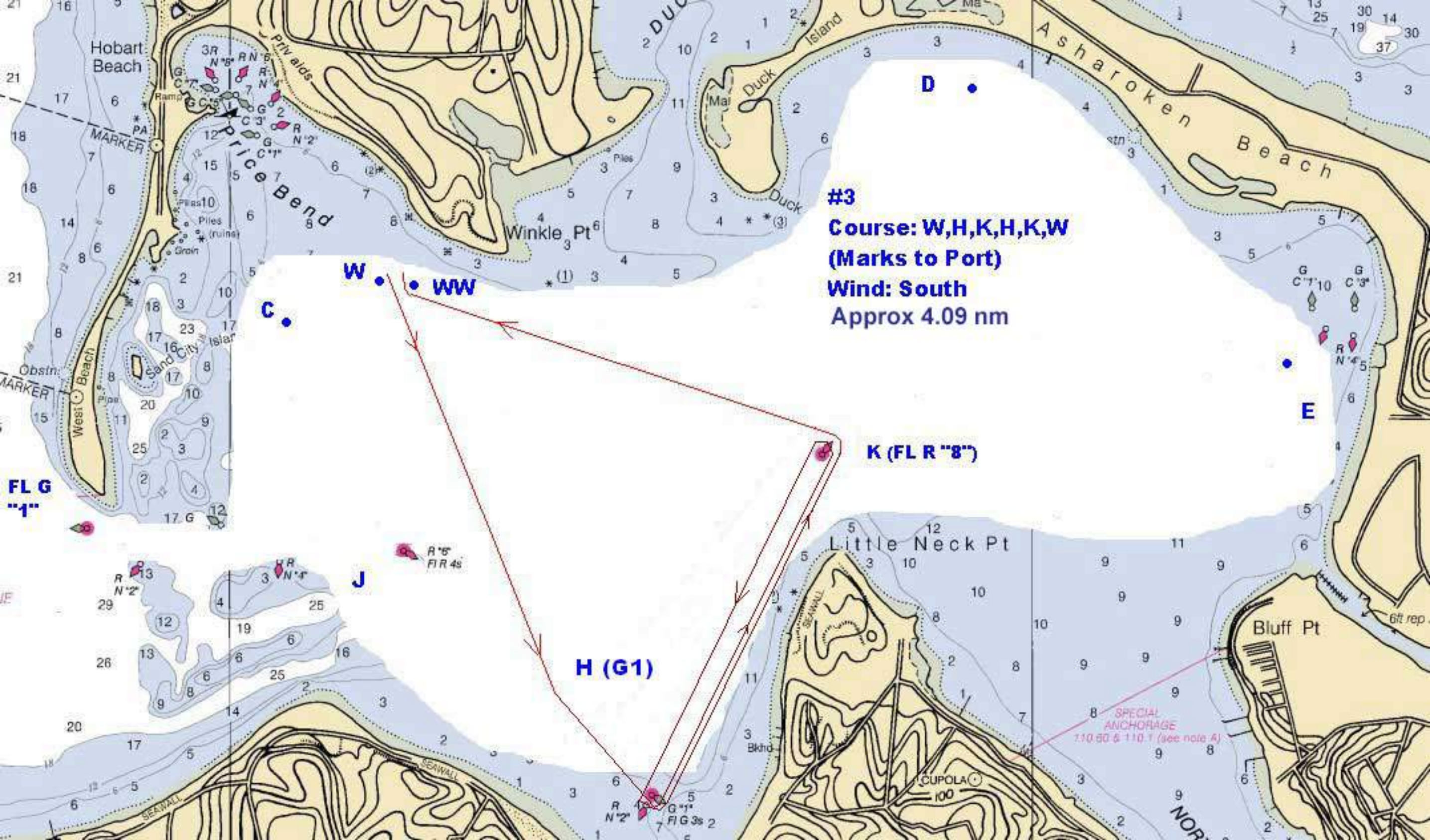
**E**

**SPECIAL ANCHORAGE**  
110.60 & 110.7 (see note A)

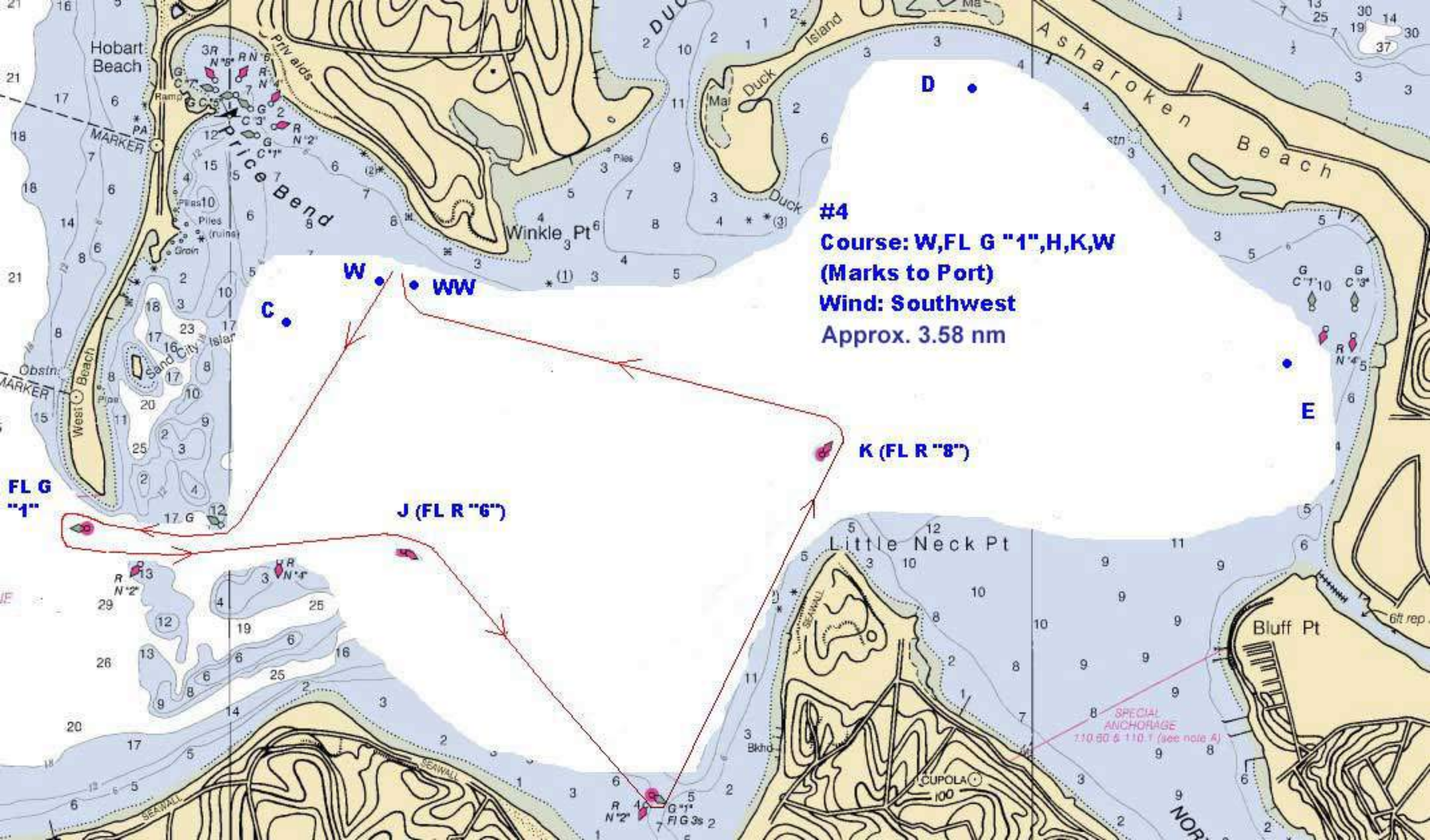












**#4**  
**Course: W,FL G "1",H,K,W**  
**(Marks to Port)**  
**Wind: Southwest**  
**Approx. 3.58 nm**

**FL G "1"**

**J (FL R "6")**

**K (FL R "8")**

**W**

**WW**

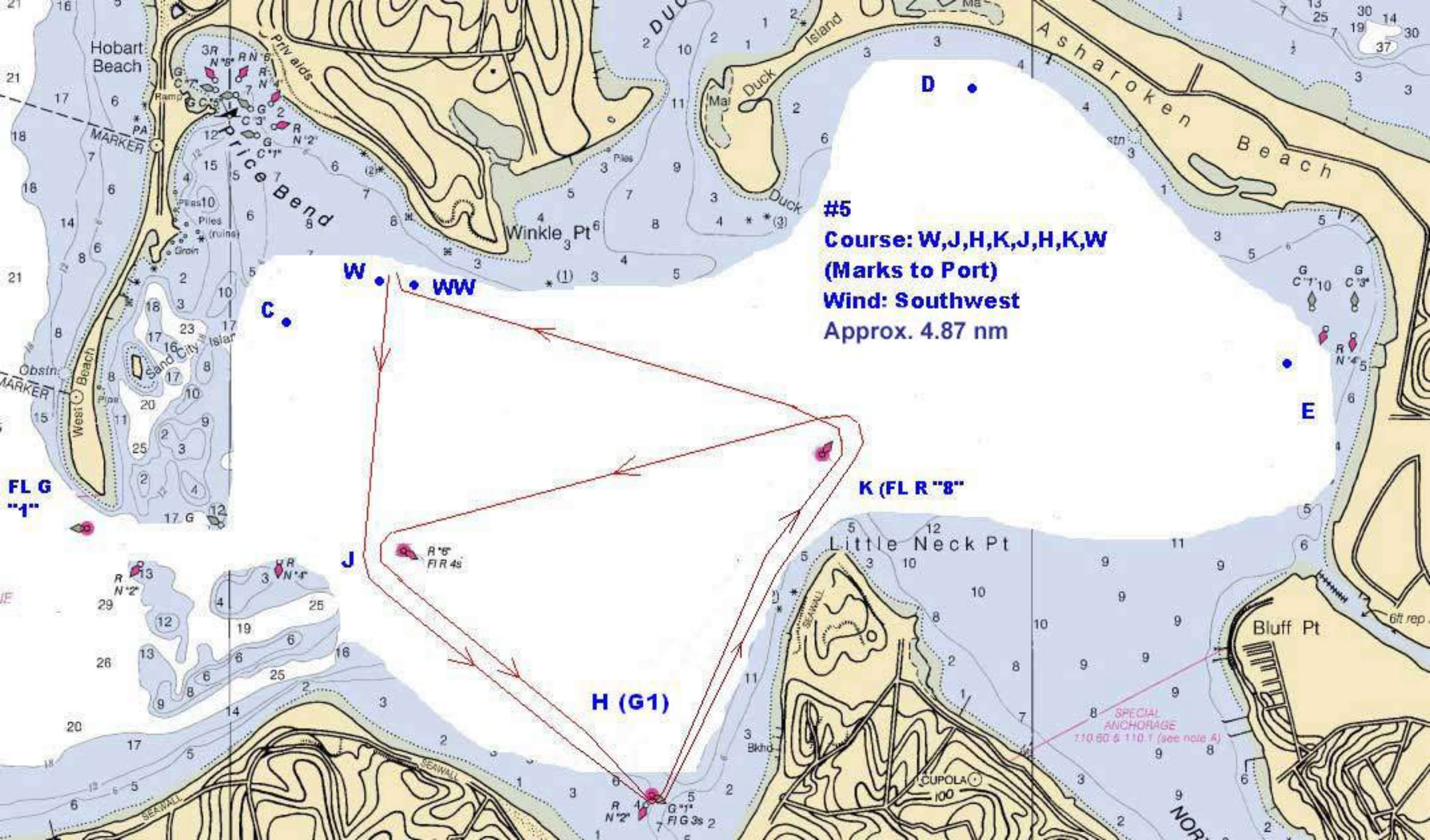
**C**

**D**

**E**

**SPECIAL ANCHORAGE**  
110.80 & 110.1 (see note A)





**#5**  
**Course: W,J,H,K,J,H,K,W**  
**(Marks to Port)**  
**Wind: Southwest**  
**Approx. 4.87 nm**

**FL G**  
**"1"**

**C**

**W** • • **WW**

**J**

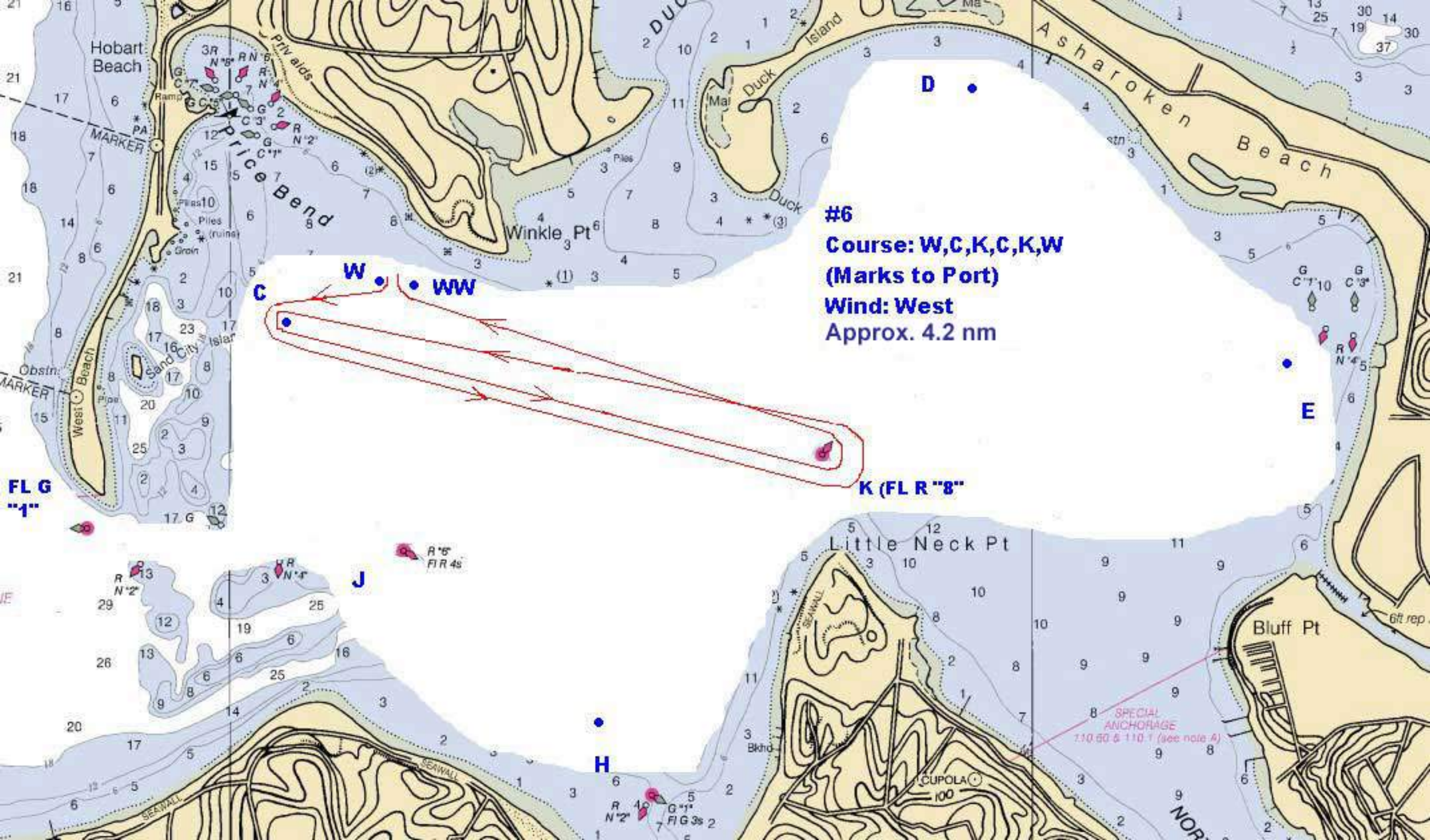
**H (G1)**

**K (FL R "8")**

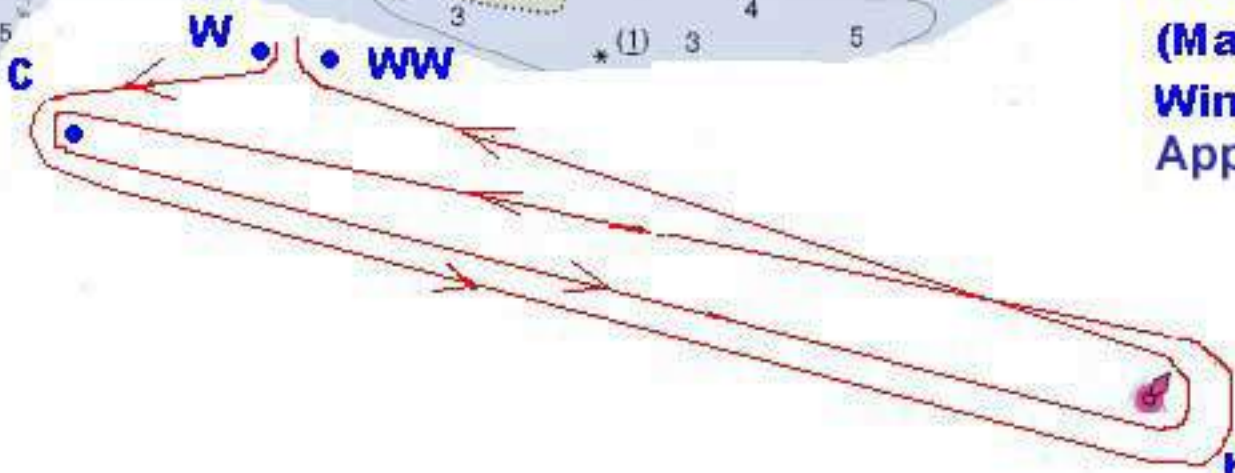
**E**

**SPECIAL ANCHORAGE**  
110.80 & 110.1 (see note A)





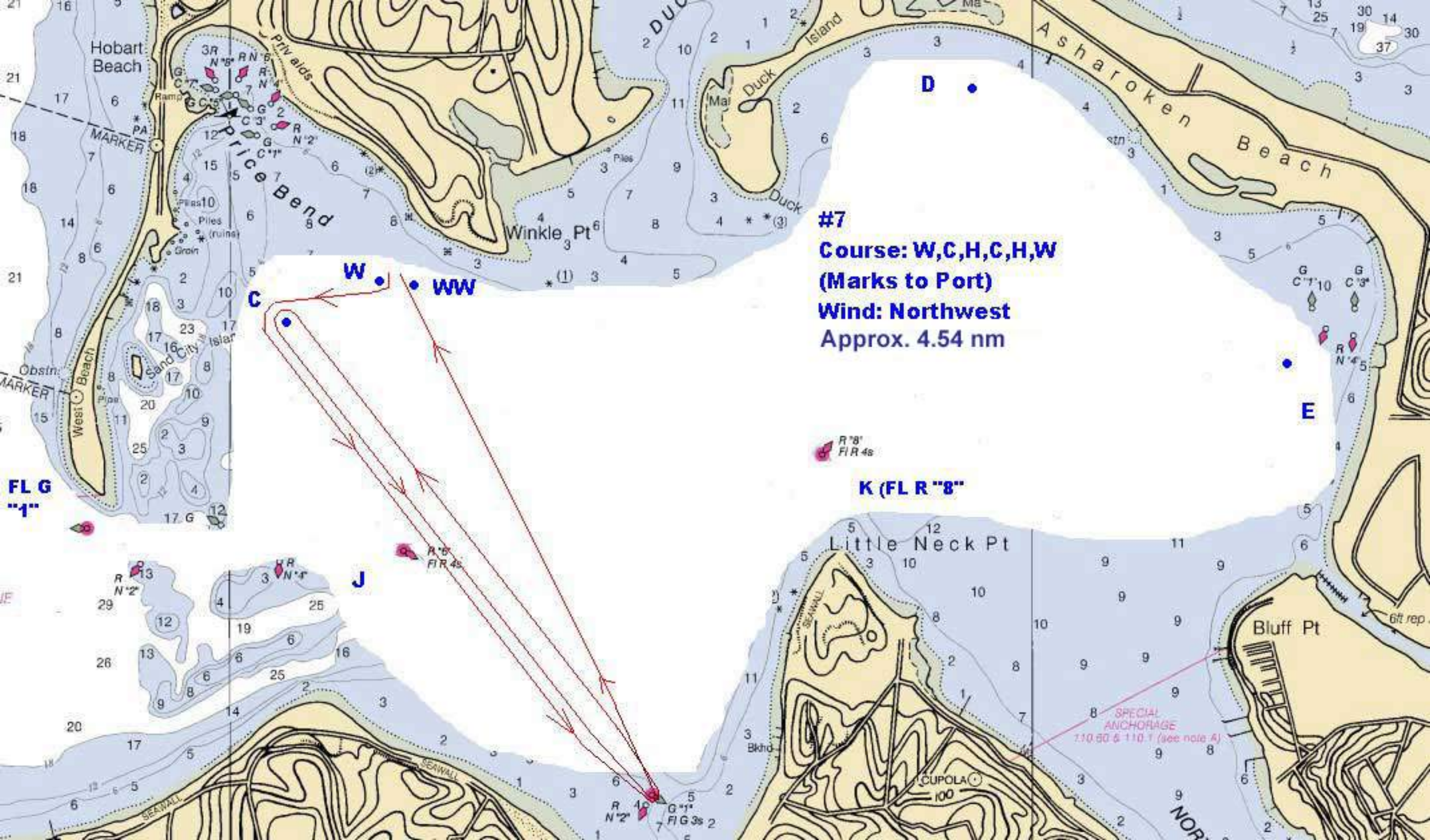
**#6**  
**Course: W,C,K,C,K,W**  
**(Marks to Port)**  
**Wind: West**  
**Approx. 4.2 nm**



**FL G**  
**"1"**

**SPECIAL ANCHORAGE**  
110.60 & 110.1 (see note A)





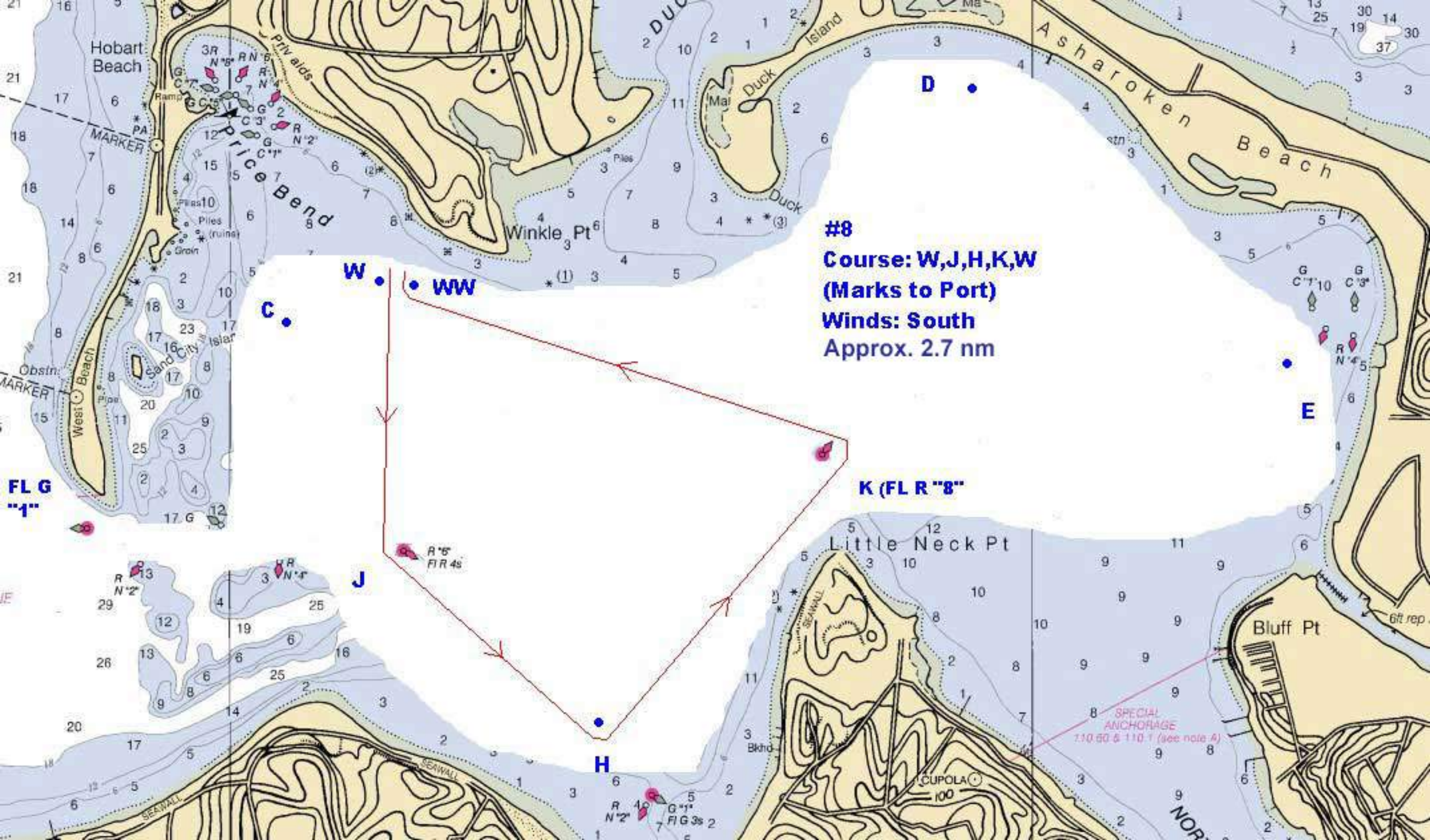
**#7**  
**Course: W,C,H,C,H,W**  
**(Marks to Port)**  
**Wind: Northwest**  
**Approx. 4.54 nm**

**FL G**  
**"1"**

**K (FL R "8")**

**SPECIAL ANCHORAGE**  
**110.80 & 110.1 (see note A)**





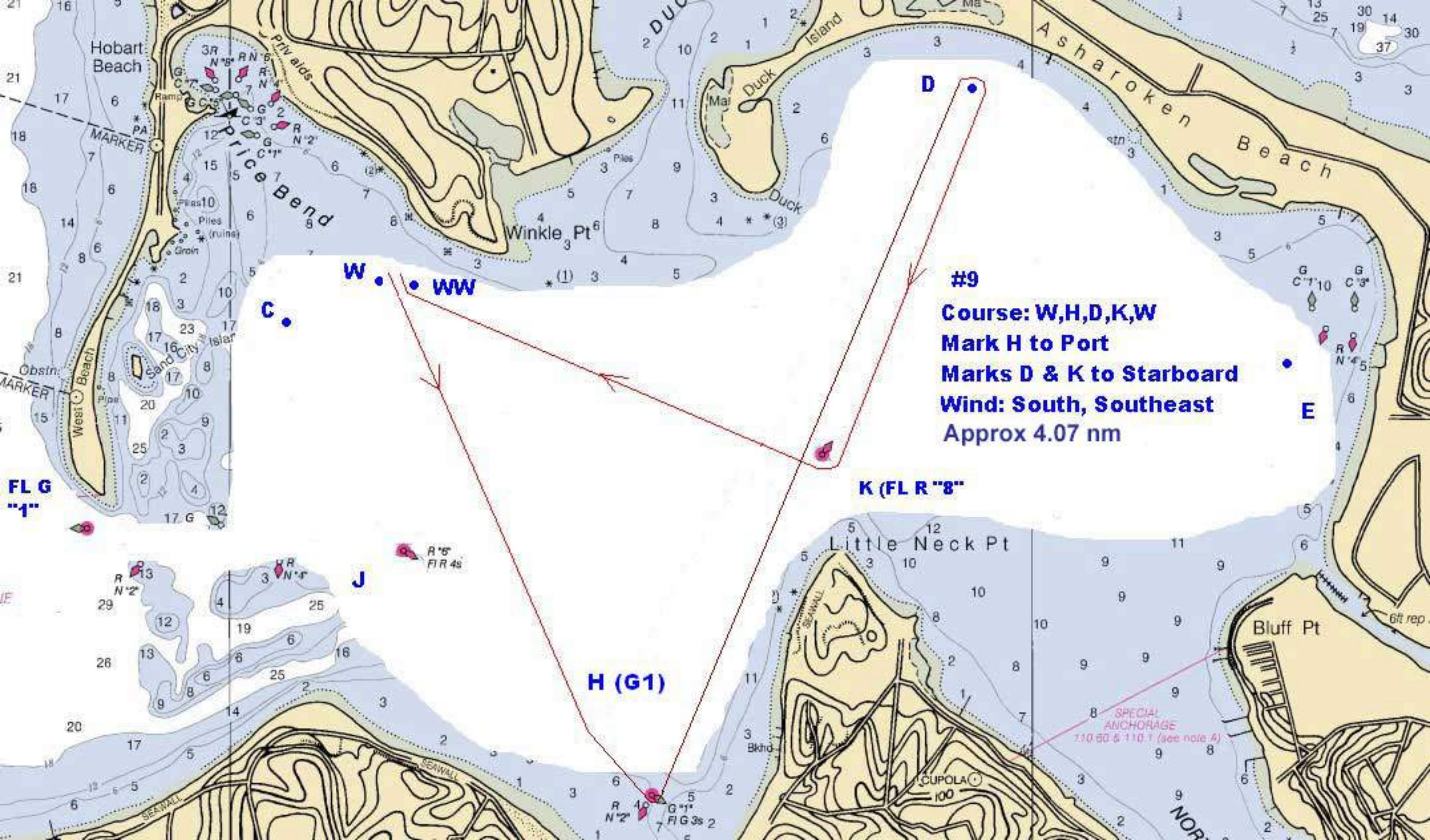
**#8**  
**Course: W,J,H,K,W**  
**(Marks to Port)**  
**Winds: South**  
**Approx. 2.7 nm**

**FL G**  
**"1"**

**K (FL R "8")**

**SPECIAL ANCHORAGE**  
110.60 & 110.1 (see note A)





**#9**  
**Course: W,H,D,K,W**  
**Mark H to Port**  
**Marks D & K to Starboard**  
**Wind: South, Southeast**  
**Approx 4.07 nm**

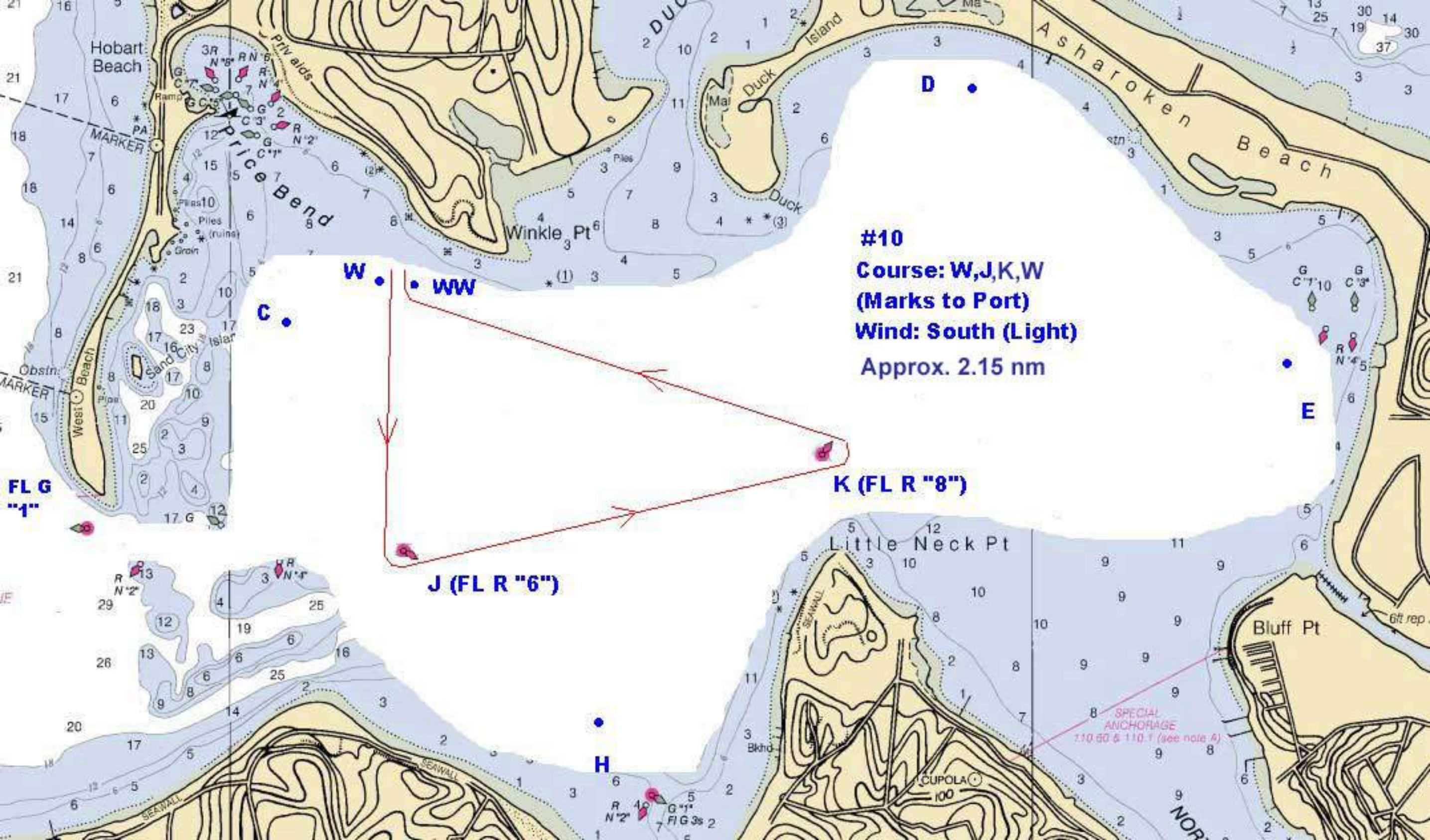
**FL G**  
**"1"**

**H (G1)**

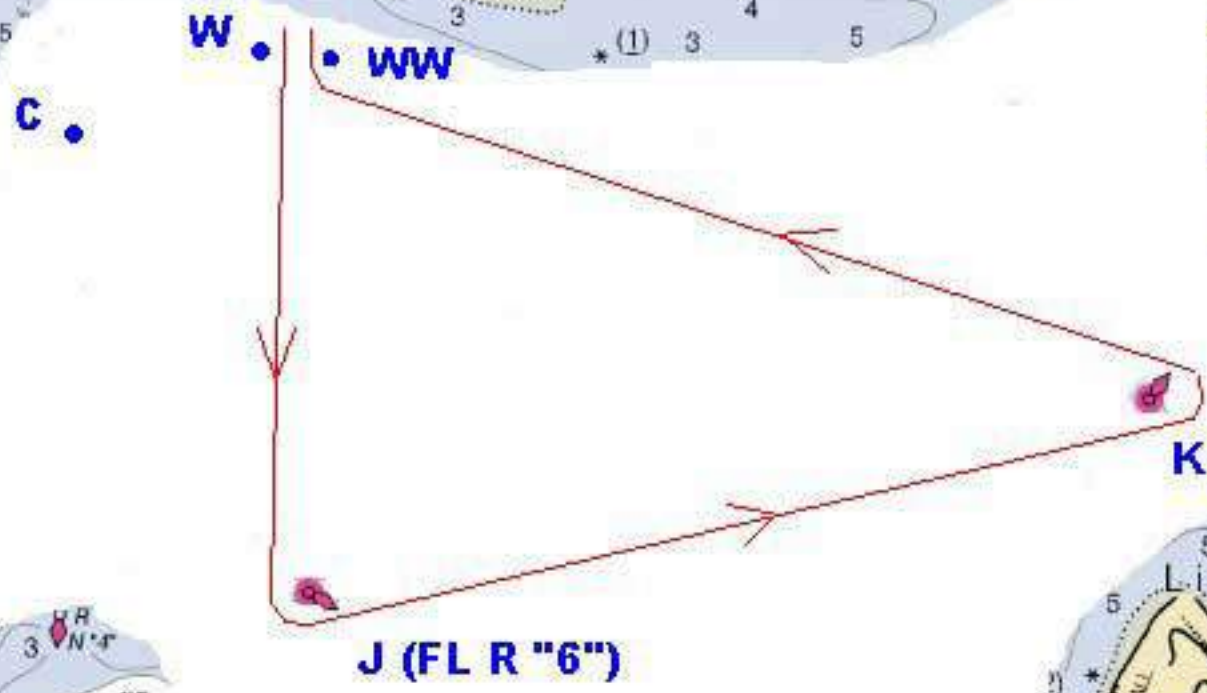
**K (FL R "8")**

**SPECIAL ANCHORAGE**  
110.80 & 110.1 (see note A)





**#10**  
**Course: W,J,K,W**  
**(Marks to Port)**  
**Wind: South (Light)**  
**Approx. 2.15 nm**



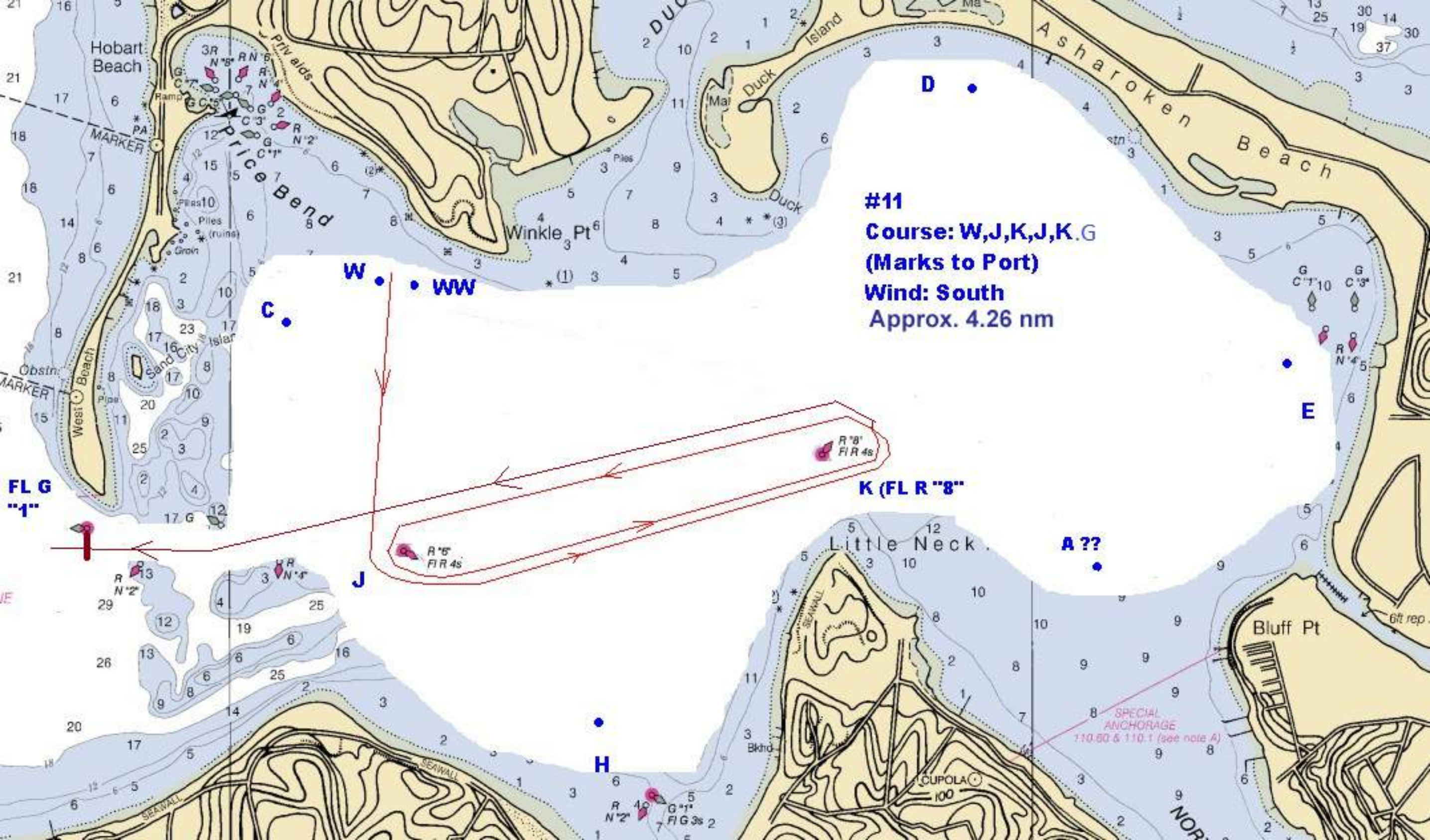
**FL G**  
**"1"**

**K (FL R "8")**

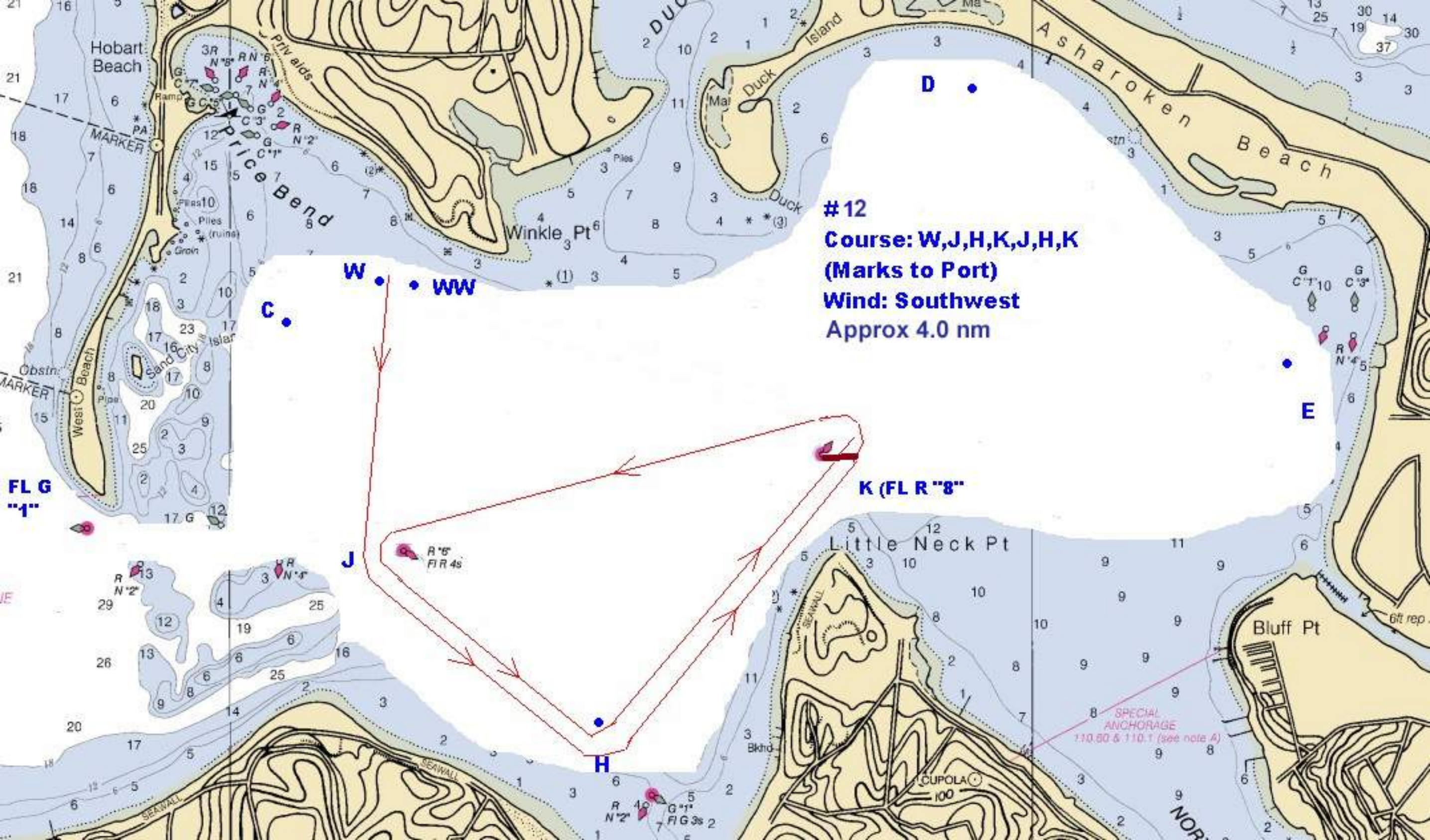
**J (FL R "6")**

**SPECIAL ANCHORAGE**  
110.00 & 110.1 (see note A)









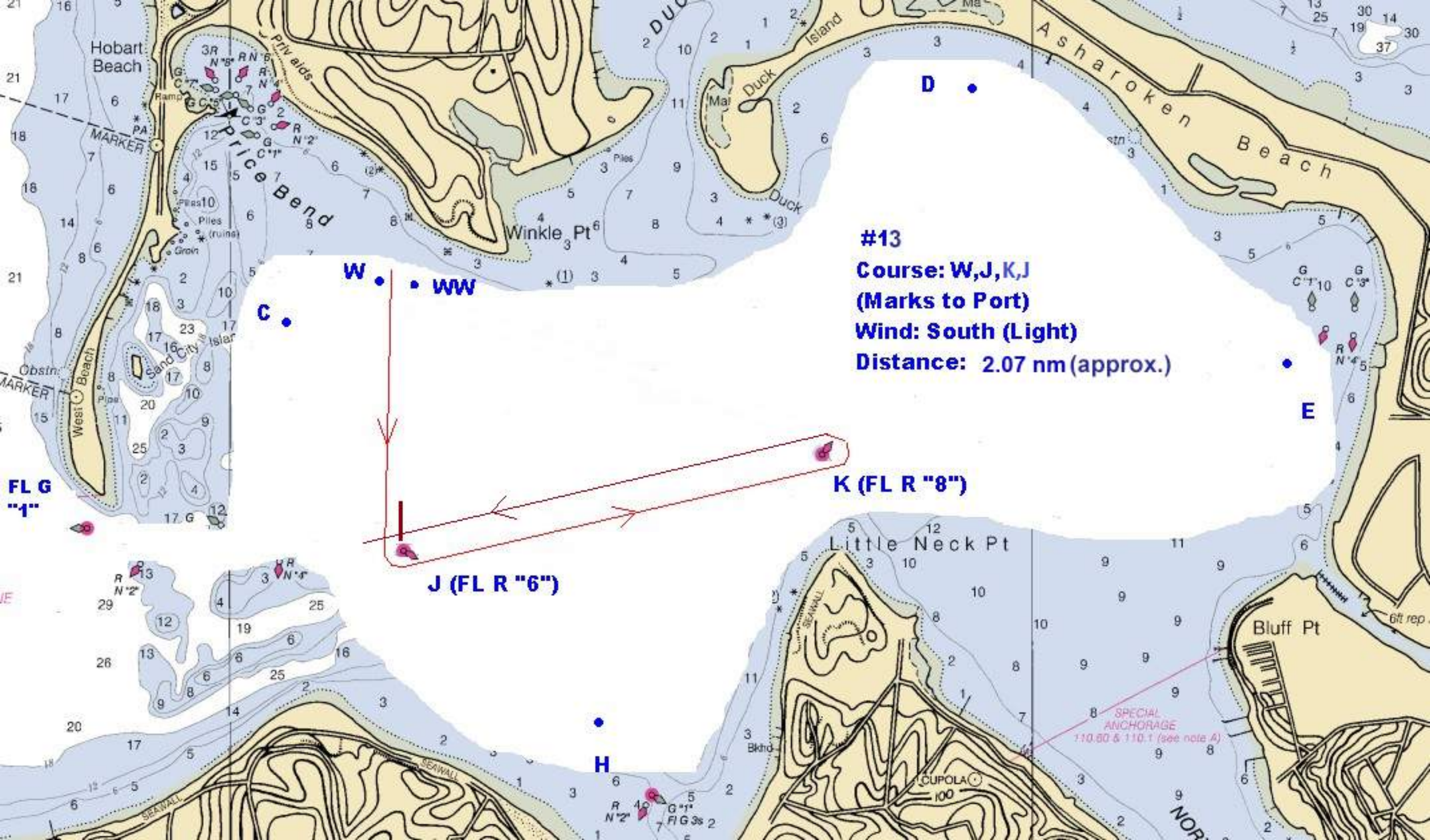
**# 12**  
**Course: W,J,H,K,J,H,K**  
**(Marks to Port)**  
**Wind: Southwest**  
**Approx 4.0 nm**

**FL G**  
**"1"**

**K (FL R "8")**

**SPECIAL ANCHORAGE**  
110.80 & 110.1 (see note A)





**#13**  
**Course: W,J,K,J**  
**(Marks to Port)**  
**Wind: South (Light)**  
**Distance: 2.07 nm (approx.)**

**FL G**  
**"1"**

**W** • • **WW**

**C** •

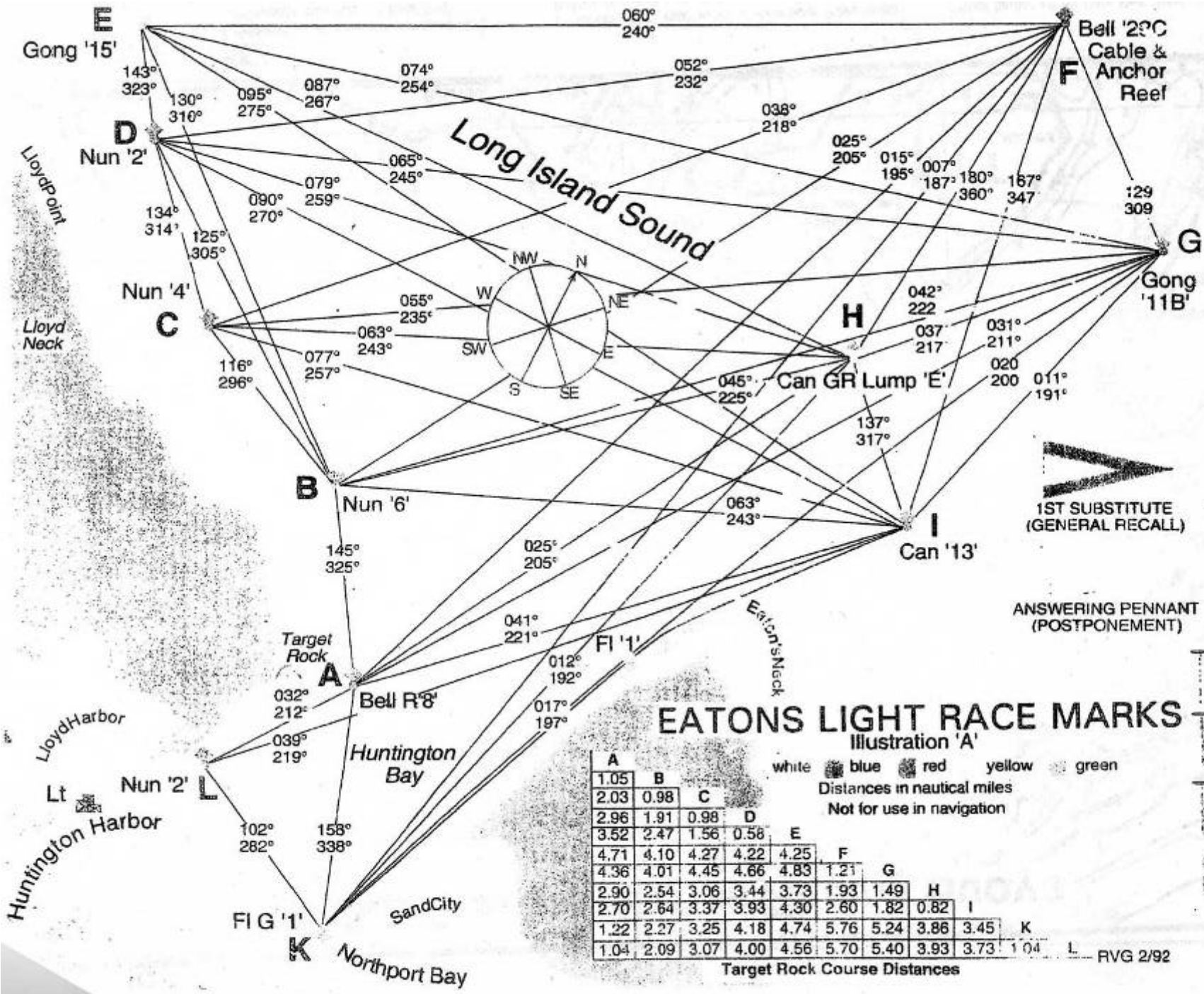
**K (FL R "8")**

**J (FL R "6")**

**H** •

**SPECIAL ANCHORAGE**  
110.80 & 110.1 (see note A)





### EATONS LIGHT RACE MARKS

Illustration 'A'

white blue red yellow green

Distances in nautical miles  
Not for use in navigation

A	B	C	D	E	F	G	H	I	K	L
1.05	0.98									
2.03	0.98									
2.96	1.91	0.98								
3.52	2.47	1.56	0.56							
4.71	4.10	4.27	4.22	4.25						
4.36	4.01	4.45	4.66	4.83	1.21					
2.90	2.54	3.06	3.44	3.73	1.93	1.49				
2.70	2.64	3.37	3.93	4.30	2.60	1.82	0.82			
1.22	2.27	3.25	4.18	4.74	5.76	5.24	3.86	3.45		
1.04	2.09	3.07	4.00	4.56	5.70	5.40	3.93	3.73	1.04	

Target Rock Course Distances

RVG 2/92

- PROTEST
- C (CHANGE COURSE)
- ' (ACKNOWLEDGE)
- N (CANCEL/ABANDON)
- S (SHORTEN COURSE)
- X (IND. RECALL)
- DIV 1
- DIV 2
- DIV 3
- DIV 4
- DIV 5

- 1ST SUBSTITUTE (GENERAL RECALL)
- ANSWERING PENNANT (POSTPONEMENT)